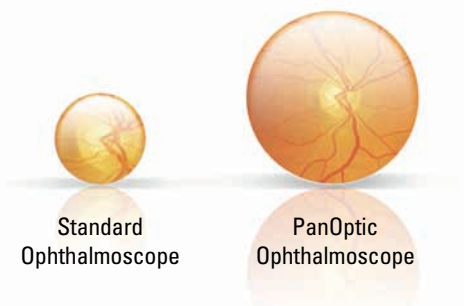




Welch Allyn PanOptic™ Ophthalmoscope

Innovative Optics for Panoramic Views of the Fundus

Developed and patented by Welch Allyn – creator of the world's first hand-held direct-illuminating ophthalmoscope – the PanOptic is a breakthrough concept in ophthalmoscopy. Thanks to an innovative, proprietary optical design known as Axial PointSource™ Optics, the PanOptic will greatly enhance your funduscopy examinations.



Standard
Ophthalmoscope

PanOptic
Ophthalmoscope

5X LARGER FIELD OF VIEW
OF THE FUNDUS

Just look at all that PanOptic has to offer:

- Fast, easy entry into small, undilated pupils
- 5X larger field of view than you see with standard ophthalmoscopes in an undilated eye
- 25° field of view versus the 5° field of view of standard ophthalmoscopes
- A 26% increase in magnification, making it easier to see retinal details
- Greater distance between practitioner and patient means greater comfort for all
- Complete compatibility with existing Welch Allyn 3.5 V power sources

To order, or for more information, please contact;

docStock
com.au

Ph: (02) 8850 7177 Fax: (02) 8850 7988
email: info@docstock.com.au
www.docstock.com.au [...medical products online]

WelchAllyn®

Advancing Frontline Care™

Revolutionary new technology for a difference you can see

■ Patented Axial PointSource™ Optics:

This proprietary technology makes it easy to enter undilated pupils and provides a 25° field of view, resulting in a view of the fundus that's 5X greater than you see with a standard ophthalmoscope in an undilated eye.

■ Halogen HPX™ Lamp:

Provides whiter, brighter light.

■ Glare Extinguishment System:

Prevents interference from unwanted glare and reflections.

■ Welch Allyn 3.5 V Power Sources:

Compatible with any standard 3.5 V power source including: desk charger handles, convertible battery handles, wall transformers and the Lithium Ion Power Handle.



PanOptic Soft Grip: Ergonomically designed for maximum comfort, balance and access to controls.

Patient Eyecup: The eyecup establishes and maintains proper viewing distance, provides image stability, serves as a pivoting point for panning around the retina, helps with orientation and screens out ambient light. The eyecup is cleanable and reusable.

Dynamic Focusing Wheel: Adjusts the focus in a continuous, smooth action for more precise control and optimum view. Available focusing range is -20 to +20 diopters.

Aperture Dial: Allows you to select micro, small and large spot sizes. Also includes red-free filter and slit aperture. Optional half-moon aperture (11810 only) or cobalt blue filter with add-on magnifying lens (11820 only) for corneal exams.

NEW! WELCH ALLYN
iEXAMINER™



Capture, Store, Send, Retrieve

- Rapid capture of fundus images on your iPhone®* for easy, cost-effective eyeground documentation
- Send images to peers across the continuum of care at a moment's notice
- Easily portable, allowing you to capture images in any clinical environment
- Lower-cost solution than traditional equipment for imaging the eye
- Facilitates patient education and compliance

For more information, visit www.welchallyn.com/iexaminer

Not for sale in the United States, pending FDA clearance

*Compatible with iPhone 4 and iPhone 4S



71811-MP
Desk Charger Set



76791-2MPX
Integrated Diagnostic System

PanOptic Ordering Information:

11810 ■ **11820** ■

- 3 spot sizes: micro, small and large
- Slit aperture
- Red-free filter
- Half-moon aperture (provides a combination of depth perception and field of view)
- Cobalt blue filter with add-on magnifying lens for corneal examinations (surrogate for Woods Light)

PanOptic Specifications:

Dimensions: 13 cm L x 3.5 cm W x 9.5 cm H (5.12" x 1.40" x 3.75") without eyecup
(with eyecup: 16.7 cm L (6.75"))

Weight: 217 g (0.48 lbs) without eyecup; 227 g (0.50 lbs) with eyecup

Focusing Range: -20 to +20 diopters

Component Information:

- 11840 iExaminer adapter only
- 11870 Reusable Patient Eyecups (package of 5)
- 03800-U Halogen HPX Lamp
- 11875 Corneal Viewing Lens (for use with 11820)
- 05258-M Diagnostic Set Carrying Case (hard)
- 05815-M Diagnostic Set Carrying Case (soft)

For more information on the Welch Allyn PanOptic Ophthalmoscope visit www.panoptic.welchallyn.com or contact your local Welch Allyn representative.

Australia: +61 29 638 3000
Malaysia: +603 788 43341

China: +86 512 68086078
Singapore: +65 6419 8100

Japan: +813 3219 0071
South Africa: +27 11 777 7555

© 2012 Welch Allyn SM2381AP Rev C iExaminer is a trademark of Welch Allyn. iPhone is a trademark of Apple®, Inc. registered in the U.S. and other countries.

WelchAllyn®

Advancing Frontline Care™